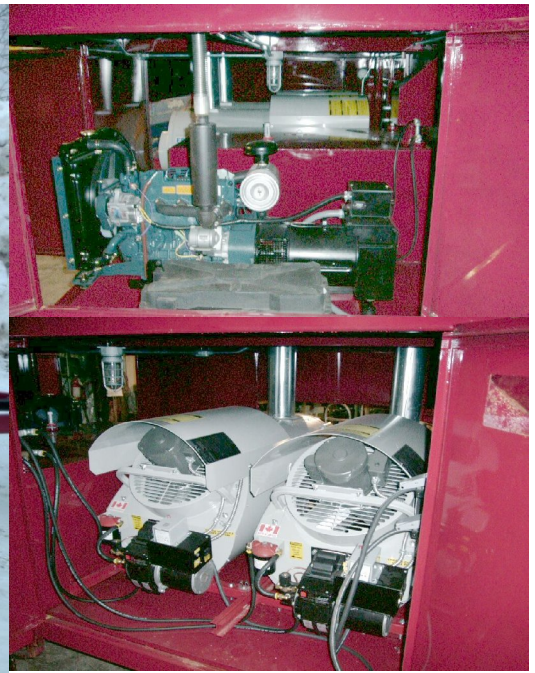


**TOTEM**

# TOTEM 10

1,000,000 BTU INDIRECT HEATER TRAILER



## SPECIFICATIONS

### OPERATING SPECIFICATIONS:

- One Million BTU (500,000 X 2)
- 25+ Hour running time (full load)
- 8 GPH Maximum - 205 gallon fuel capacity

### HEATER SYSTEM:

- Two ICE 500,000 BTU Frost-Fighter Heaters
- Indirect fired for clean heated air
- 4 each 12" Ducted heat outlets
  - OPTIONAL dual 16" outlets available
- Over-temp and flame-detection safety shutdowns
- UL and CSA Listed heaters
- Arctic Proven design

### GENERATOR:

- KUBOTA Liquid-cooled 1800 rpm diesel engine
- 10 kW prime power rating
- Commercial grade wiring, circuit protection, and conduit throughout
- Safety shutdowns on engine
- Easy access for service

### WEIGHT AND DIMENSIONS:

|                                |   |
|--------------------------------|---|
| Overall height (highest point) | 78 Inches<br>(193 cm)                       |
| Overall length (with tongue)   | 204 Inches<br>(519 cm)                      |
| Overall width (widest point)   | 90 Inches<br>(229 cm)                       |
| Weight (Operating)             | 5,900 lbs.<br>(2,680 kg)                    |
| Dry Shipping weight            | 4,500 lbs.<br>(2,045 kg)                    |
| Air Cargo dimensions**         | 150" L x 84"H x 72"H<br>(381cm x 213 x 183) |

\*\* Unit may be equipped with a removable trailer tongue and fenders for ease of loading and smaller cubic space. Ask for details.

*Rental units are available by the day, week, or month, Ask about financing and our in-house lease-purchase programs. All units available for purchase!*



**Totem Equipment & Supply, Inc.**

2536 Commercial Drive

Anchorage, Alaska 99501

(907) 276-2858 phone (907) 258-4623 fax

On the web: [www.toteminc.com](http://www.toteminc.com)

